

# GoldPen

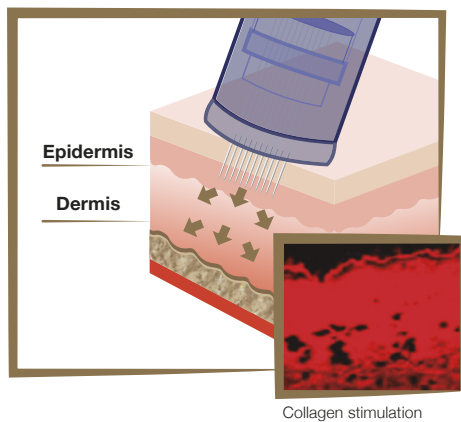
Auto micro-needle system

Therapies For  
Skin Regeneration

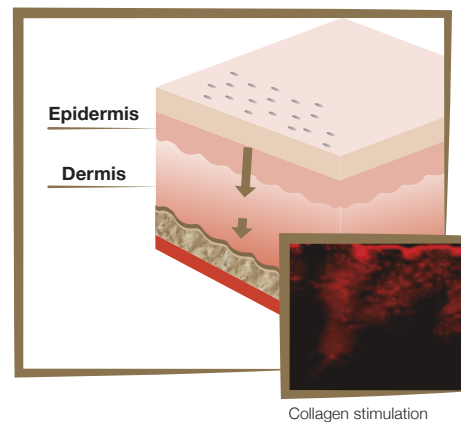
# GoldPen

- Stimulates follicle activation in hair loss treatments.
- Brighter-looking skin. Improves appearance and texture of skin.
- Helps eliminate age spots, exfoliating the outer layers and deeply regenerating the skin.
- Activates and stimulates natural collagen production.
- Reduces expression lines.
- Visible improvement to stretch marks, scars and keloids.
- Other applications: PRP, mesobotox, alopecia, melasma treatments, hyperhidrosis treatments, etc...
- Up to 90% penetration of active ingredients, increasing their effectiveness.

## GoldPen



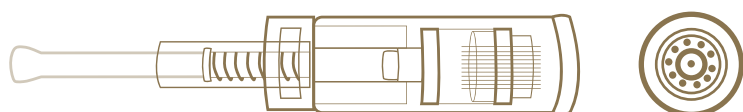
## Traditional roller



Enhanced penetration of active ingredients: **More EFFECTIVE**

# MICRONEEDLE THERAPIES

GoldPen is the safest, most hygienic, fastest and most efficient transdermal delivery system. Its unique microneedling system creates thousands of microchannels quickly and safely, increasing collagen and elastin production in a safe and natural way for the patient. GoldPen is a practical and effective tool to help maximise the impact of anti-ageing facial and body treatments. It ensures active ingredients are delivered in the correct location and in the right way.



It has a single-use head with **11 microneedles**. Depth of penetration can be regulated **between 0mm and 2.5mm**. Needle speed up to 120 cycles / second. It creates up to **1,200 microchannels per second**, hence greater efficiency in the delivery of active ingredients.



## ADVANTAGES

- **Less redness and scleroderma.** - Eliminates side effects, keeping skin softer.
- **Shorter recovery time** after each session.
- **Easier handling.** Simple and easy to transport. Low cost supplies.
- **Extremely versatile** for a wide range of treatments. Alopecia, wrinkles, age spots, scars, stretch marks, PRP, melasma, hyperhidrosis, mesobotox...
- The use of **disposable needles** eliminates risk of infection.
- Treatments can be carried out **faster and with greater precision** than with traditional rollers.
- Needles can be adjusted to a depth ranging from **0 to 2.5 mm**.
- Much **less pain** and shorter treatment time.

THE BEST COMBINATION

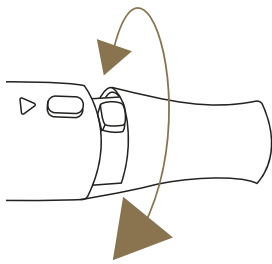
# GoldPen & Anti-Ageing Solutions



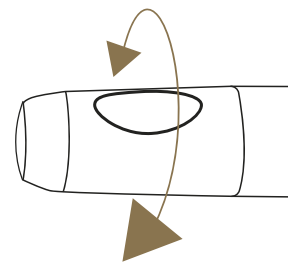
All our solutions could be mixed for enhance the effectivity of the treatment.

# GUIDLINES FOR USE

	CYCLES / SEC.	MICROCHANNELS / SEC.
LEVEL 1	20-25 cycles	220-275
LEVEL 2	30-35 cycles	330-385
LEVEL 3	40-45 cycles	440-495
LEVEL 4	50-55 cycles	550-605
LEVEL 5	60-65 cycles	660-751
LEVEL 6	70-75 cycles	770-825
LEVEL 7	80-85 cycles	880-935
LEVEL 8	115-120 cycles	1265-1320



**Speed Selection**



**Depth Selection**

**Forehead and brow**  
**Fine skin**  
 0.5 - 0.75 mm  
**Recommended speed**  
 2-3  
**Thick skin**  
 0.75 - 1.00 mm  
**Recommended speed**  
 4-5

**Nose**  
**Fine skin**  
 0.75 - 1.00 mm  
**Recommended speed**  
 2-3  
**Thick skin**  
 1.00 mm  
**Recommended speed**  
 4-5

**Lips**  
**Fine skin**  
 0.25 mm  
**Recommended speed**  
 1-2  
**Thick skin**  
 0.25 mm  
**Recommended speed**  
 1-2

**Eye area**  
**Fine skin**  
 0.25 mm  
**Recommended speed**  
 2-3  
**Thick skin**  
 0.25 mm  
**Recommended speed**  
 2-3

**Cheeks**  
**Fine skin**  
 1.00 mm  
**Recommended speed**  
 4-5  
**Thick skin**  
 1.00 - 1.25 mm  
**Recommended speed**  
 4-5

**Scars**  
**Fine skin**  
 1.25 - 1.5 mm  
**Recommended speed**  
 5-6  
**Thick skin**  
 1.25-1.5 mm  
**Recommended speed**  
 5-6

**Stretch marks**  
**Fine skin**  
 1.5 - 2.0 mm  
**Recommended speed**  
 6-7  
**Thick skin**  
 1.5-2.5 mm  
**Recommended speed**  
 6-7



As a general rule, the greater the needle depth, the greater the speed required.

dermica<sup>®</sup>  
laboratoires

Dermica Laboratoires Geneve,  
SARL, Rue Lamartine 27,  
1203.Geneve, Switzerland.  
info.switzerland@dermica.com

[www.dermica.com](http://www.dermica.com)

Follow us on  & 

DERMICA LABORATOIRES EUROPE SL.  
Av. Ciclista Mariano Rojas 76.  
Planta 1ª. 30009. Murcia.Spain  
info.europe@dermica.com  
T. +34 968 416 972